



Newburgh Road, W3

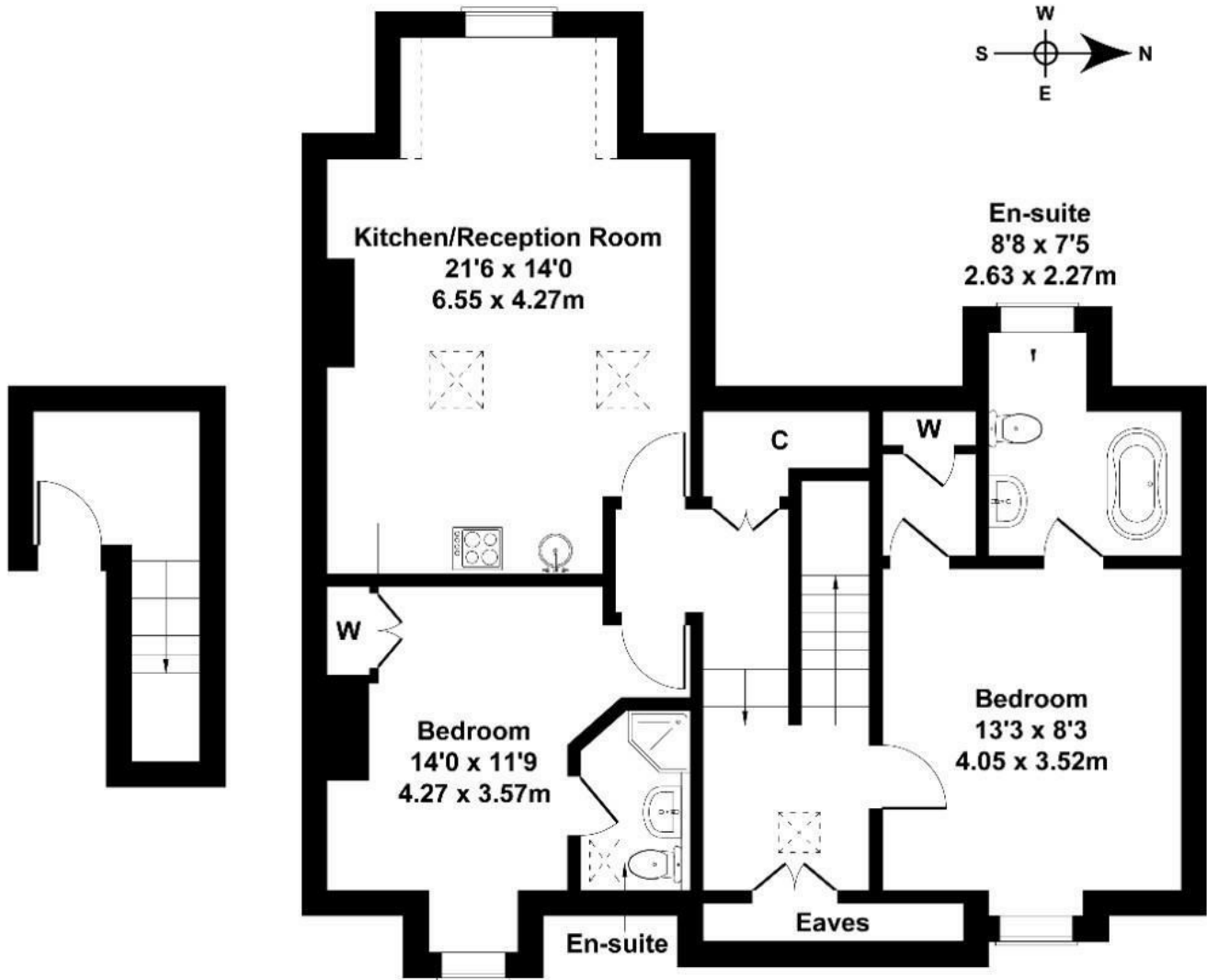
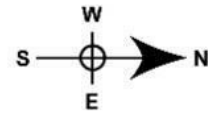
Long Let. This two bedroom flat benefits from a modern interior, great location and comes part furnished.

- Available now
- Part furnished
- Parking space provided
- Two bathrooms
- Ideal location
- Close to transport and amenities

£1,950

Newburgh Road

Approximate Gross Internal Area
861 sq ft - 80 sq m



FIRST FLOOR

SECOND FLOOR

Not to Scale. Produced by The Plan Portal 2024
For Illustrative Purposes Only.

Energy Efficiency Rating		
	Current	Potential
Very energy efficient - lower running costs		
(92 plus) A		
(81-91) B		
(69-80) C		
(55-68) D		
(39-54) E		
(21-38) F		
(1-20) G		
Not energy efficient - higher running costs		
England & Wales	EU Directive 2002/91/EC	